



LOGIN DEFENDER

Quick Guide

Copyright © 2006-2012 by Cryptware di Ugo Chirico

Index

1 Introduction.....	3
1.1 Main features	3
2 Installation	3
3 Control Panel	3
3.1 Configuring the workstation.....	5
3.2 Configuring users on smart card.....	5
3.3 License Installation	7
4 Login	8
4.1 XP, Windows 2003	8
4.2 Vista, Windows 7 e Windows 2008	9

1 Introduction

Login Defender is a system for controlling access to your Windows PC using a smart card or token equivalent.

Login Defender replaces the standard windows authentication module and offers a two-factor login: smart card + PIN or smart card + biometric recognition of fingerprint.

1.1 Main features

- supported platforms: XP, Vista e Windows 7, 32 e 64bit
- locale or domain authentication by username e password
- OTP (optional) to modify the password after each login
- compliant with PKCS#11 specifications
- compliant with any PKCS#11 smart card/token
- compliant with CNS/CRS
- integrated with biometric Match-On-Card (Siemens, Athena, etc).
- integrated with software biometric match (Precise Biometrics, Biometrika).
- control panel to manage the software and the smart card/token.

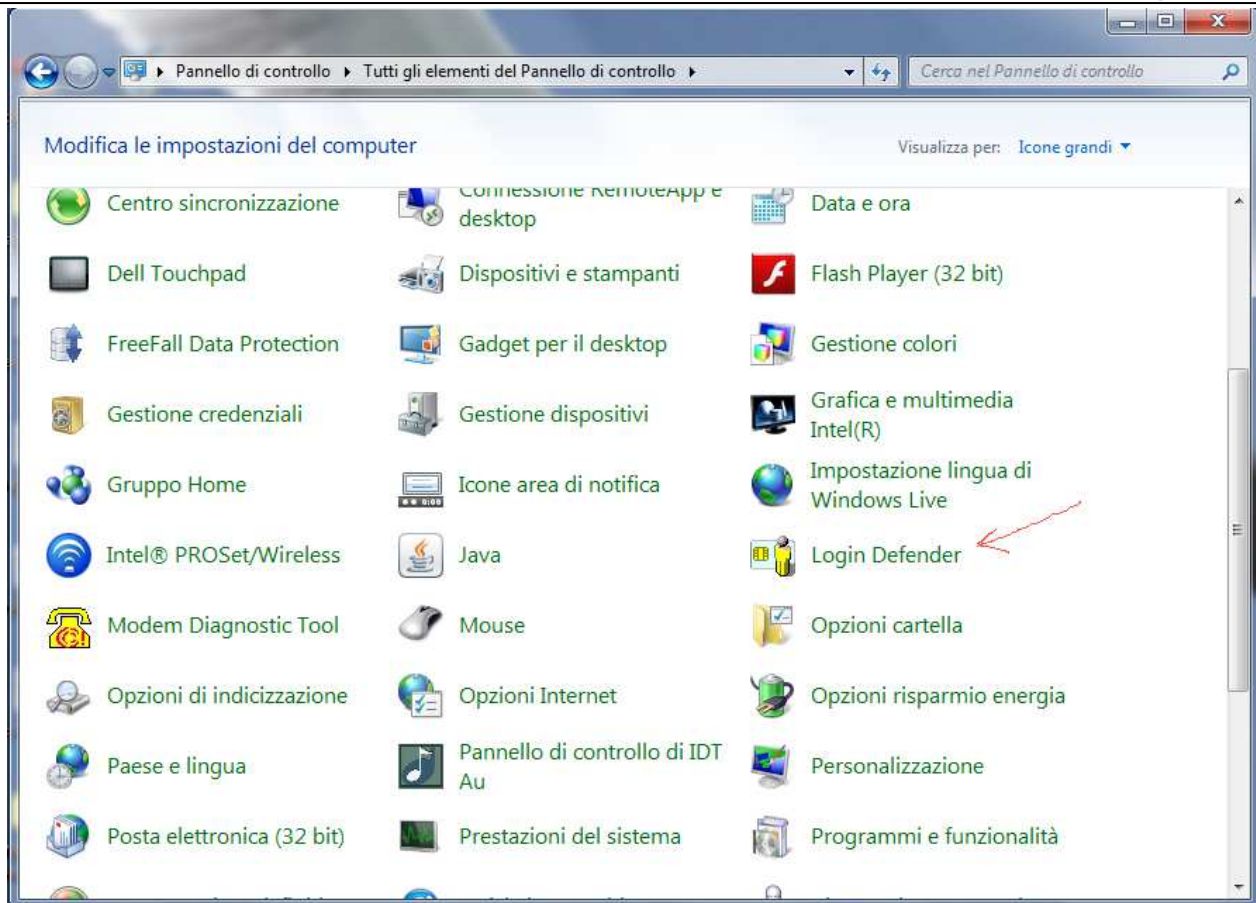
2 Installation

- 1) Install the smart card and related drivers.
- 2) Install the PKCS#11 module related to the given smart card.
- 3) Install LoginDefender by the related setup.
After installation the setup will launch the Login Defender Control Panel for system configuration and user management on a smart card. Continue to step 2 to configure users on the smart card.

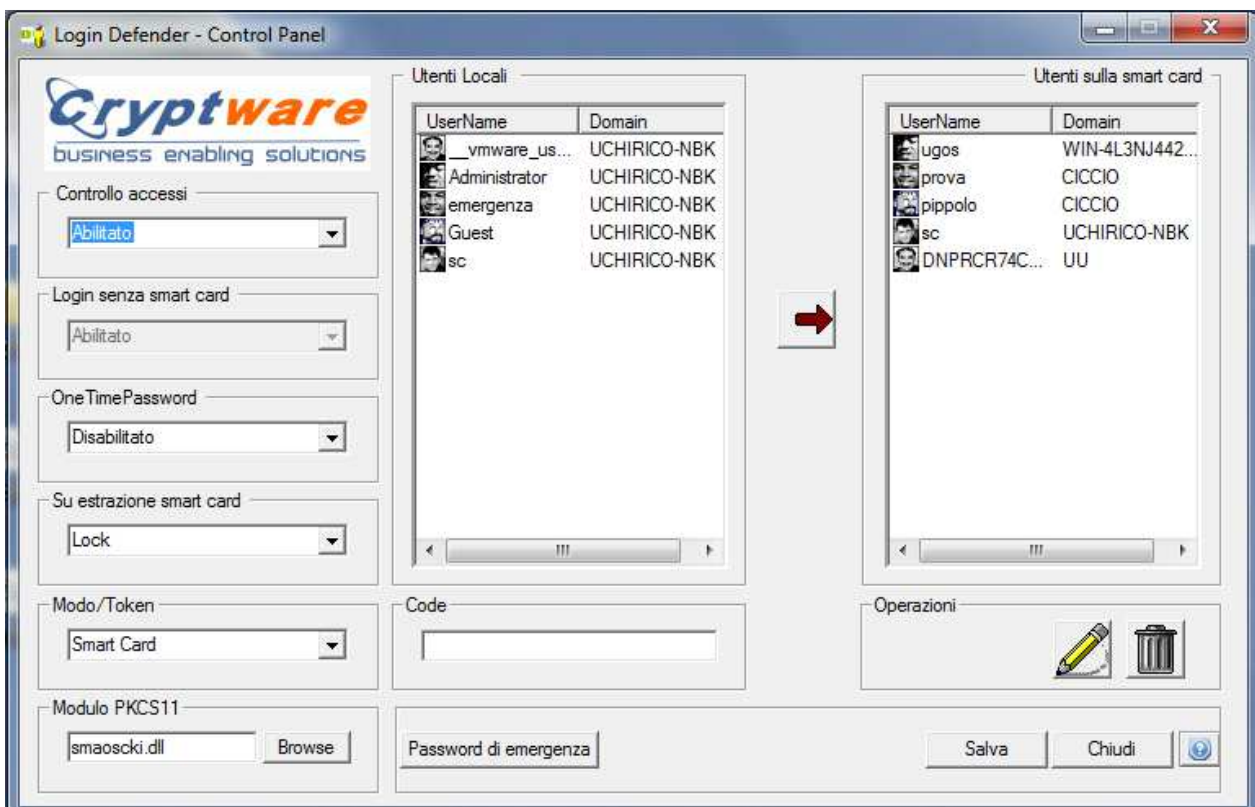
After installation Login Defender will work in demo mode allowing 100 login operations

3 Control Panel

The control panel allows to set up users on the smart card and to configure the workstation. To access the Control Panel open the windows control panel by going to Start-> Control Panel and click on the Login Defender icon as shown below:



The control panel is shown in the following picture:



3.1 Configuring the workstation

Please refer to the previous picture that shows the control panel.

The list of "Local Users" on the right shows all the local users are on the workstation.

The list "Users on the smart card" on the left shows the users configured on the smart card.

The drop-down menu "Access Control", allows you to enable or disable access control Login Defender.

The drop-down menu "Login Without smart card" is used to enable or disable the ability to login to the system even without smart card with the usual username and password credentials

The drop-down menu "OneTimePassword" allows you to enable or disable the OTP to automatically change the password after the login. With this function, when the one-time password is enabled, log Defender generate a new random password for each login, modifying it on the smart card and the system / domain. In this way each password is used for only one login.

The drop-down menu "On smart card extraction " is used to set the behavior Login Defender to do when the smart card is removed from the player. It can be set to:

- 1) "Lock the workstation" to lock the workstation;
- 2) "Logoff" to disconnect the session
- 3) "Shutdown" to turn off the location.

The "PKCS#11 module" sets the PKCS#11 module smart card / token in use. For smart cards Cryptware CK SmartOS the field must be set to "smaoscki.dll" (this is also the default value after installation).

The drop-down menu "Mode / Token", allows you to set the access mode to the PC:

- 1) Smart Card,
- 2) Smart Card + Biometric Recognition,
- 3) Smart Card + Match-on-Card Recognition Biometric
- 4) Biometric Recognition

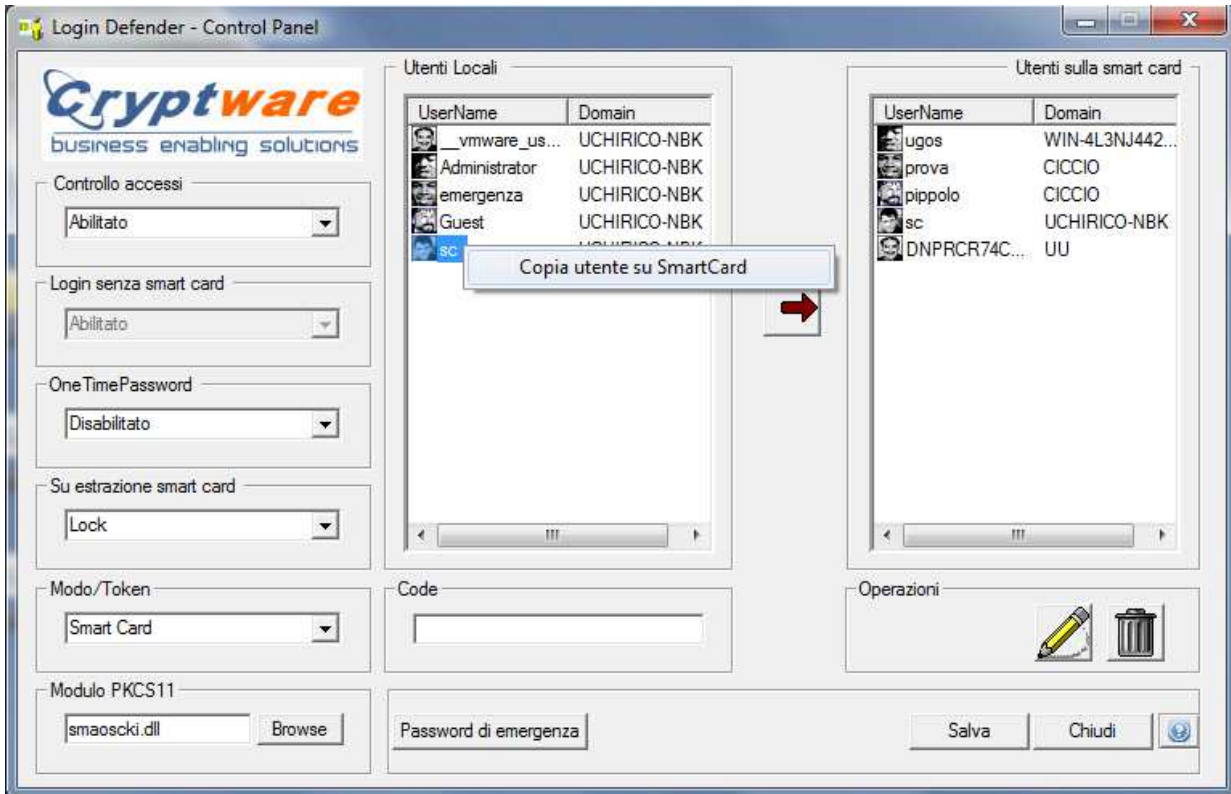
The "Recovery Password" allows you to set the password to be used as recovery access. The recovery access can be used when the smart card enabled to enter the booth is not available (eg has been lost or has failed).

The changes made to the configuration of the workstation are saved with the save button.

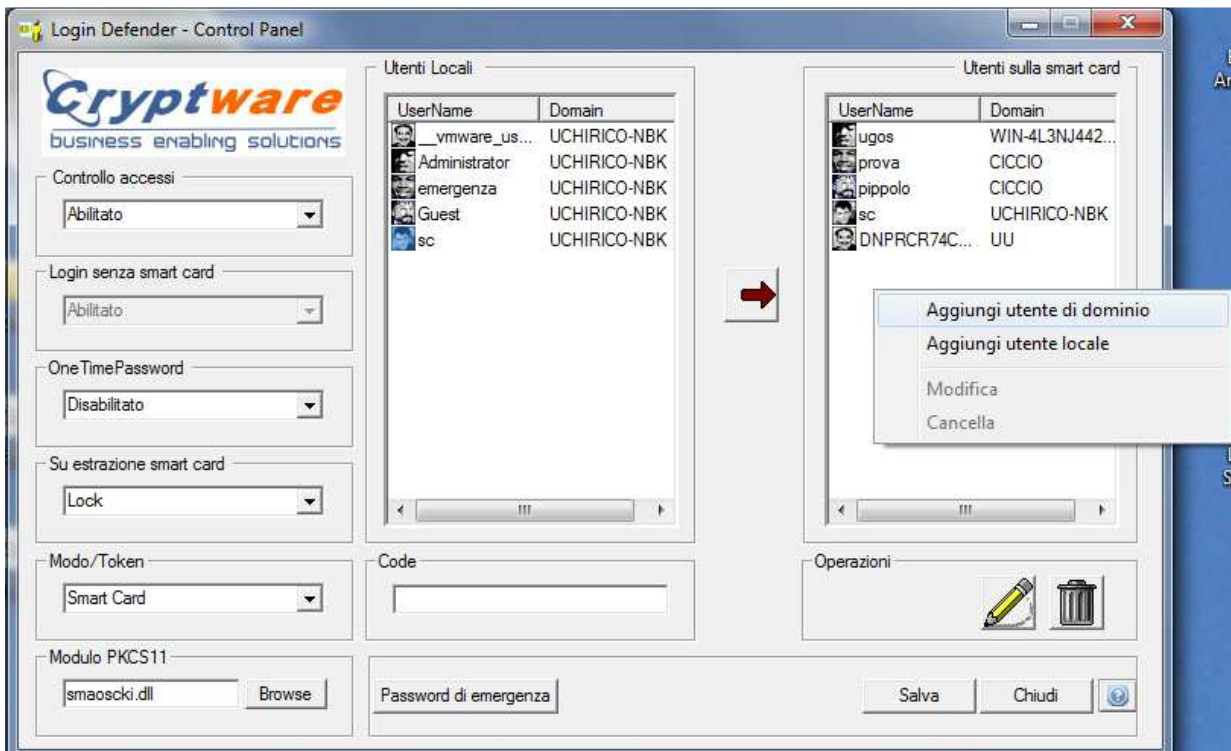
3.2 Configuring users on smart card

Inserting the smart card into the reader, in the list of "Users on the smart card" are loaded the users stored in the smart card.

To insert in the smart card an existing user on the workstation, right-click the user item in the list of local users and select "Copy User to Smart Card"



To add a new local or domain user, right-click on the list of users in the smart card and select "Add a local user" or "Add a domain user."



Adding a new local user, new user account on the workstation (belonging to the Power User group) and on smart card will be created.

Adding a new domain user, you will add a new user in the smart card, belonging to the specified domain, but be warned, it will not create any new user on the domain. The domain user must already exist on the domain (in this case the password you specified when creating the user in the smart card must match the current password of it) or, if not present, it will be created by the domain with the password you specified when creating the user in the smart card.

3.3 License Installation

As mentioned previously, after the installation Login Defender will work in demonstration mode allowing 100 login. After the trial period, in order to continue to access the smart card you need to install the license.

The license is valid for a single PC. The license key is associated with a characteristic of the PC ID and the ID is in the About window that appears when you press the button at the bottom right of the Login Defender control panel.

The license key must be entered in the "Code" field at the bottom left of the control panel login Defender.

Therefore, the procedure to install the license:

- 1) press the button  in the lower right corner to bring up the About dialog



- 2) Communicate the ID field in the display.
From this ID, specific workstation, the license key will be calculated.
- 3) Enter the license code received in the "Code" field and press "Save"

4 Login

Once the user is created on the smart card, the login procedure is extremely simple.

4.1 XP, Windows 2003

On Windows XP and Windows 2003 is the classic login window prompting you to press ALT + CTRL + DEL.



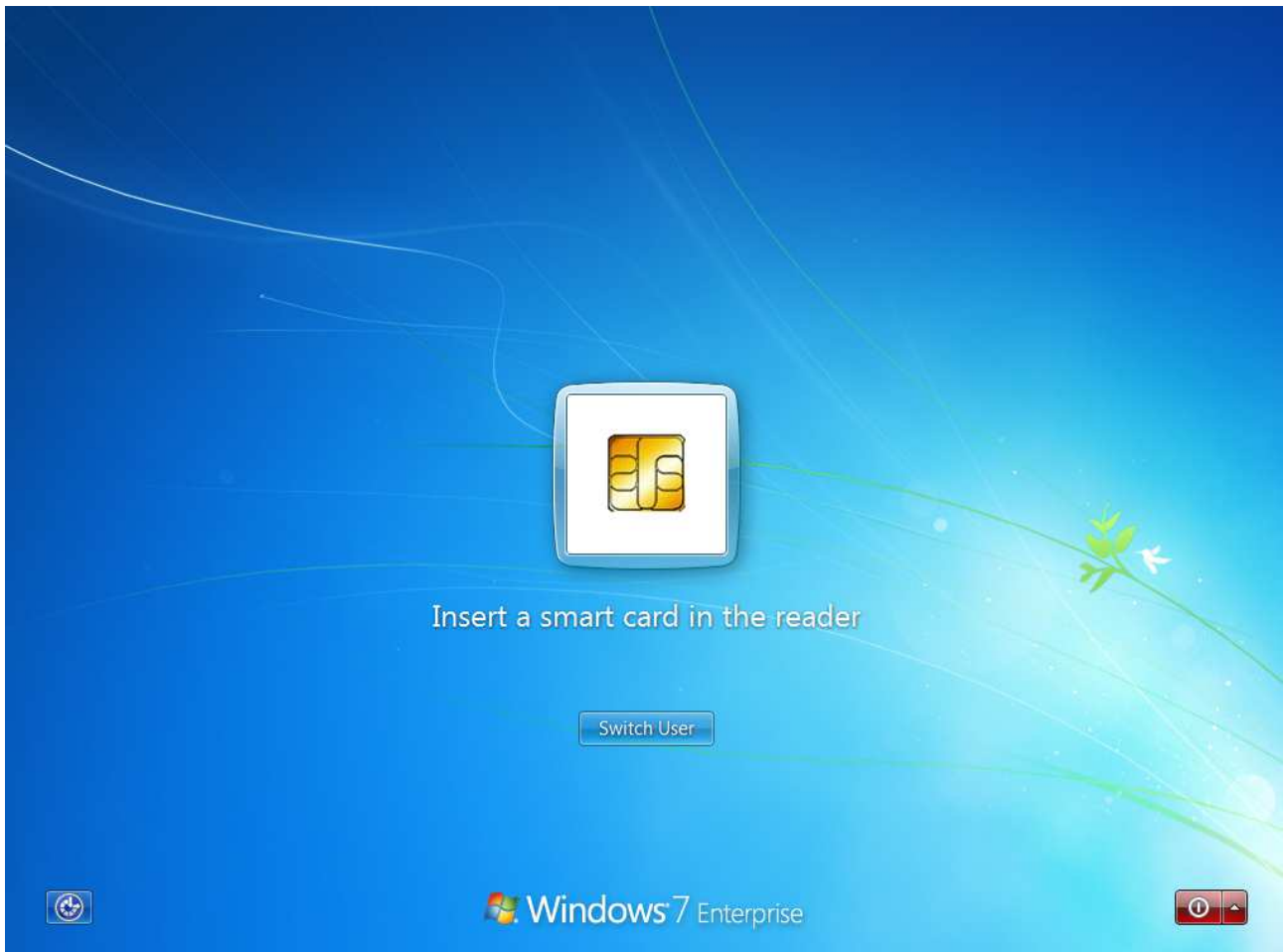
To log in to the workstation:

- 1) insert the smart card into the reader. If you have already inserted it, press ALT + CTRL + DEL
- 2) select one of the users on a smart card shown in the window
- 3) enter your PIN when prompted

The smart card can be stored multiple users, for this reason, at login time Login Defender allows you to choose one of the users in the smart card.

4.2 Vista, Windows 7 e Windows 2008

On Windows Vista, Windows 7 and Windows 2008 is the screen for entering credentials.



To log in to the workstation:

- 1) insert the smart card into the reader. If you have already inserted remove and reinsert it again
- 2) select one of the users on a smart card shown in the appropriate drop-down menu
- 3) Press the arrow immediately to the right of the selected user
- 4) enter your PIN when prompted

The smart card can be registered multiple users, for this reason, at login time Login Defender allows you to choose one of the users in the smart card.